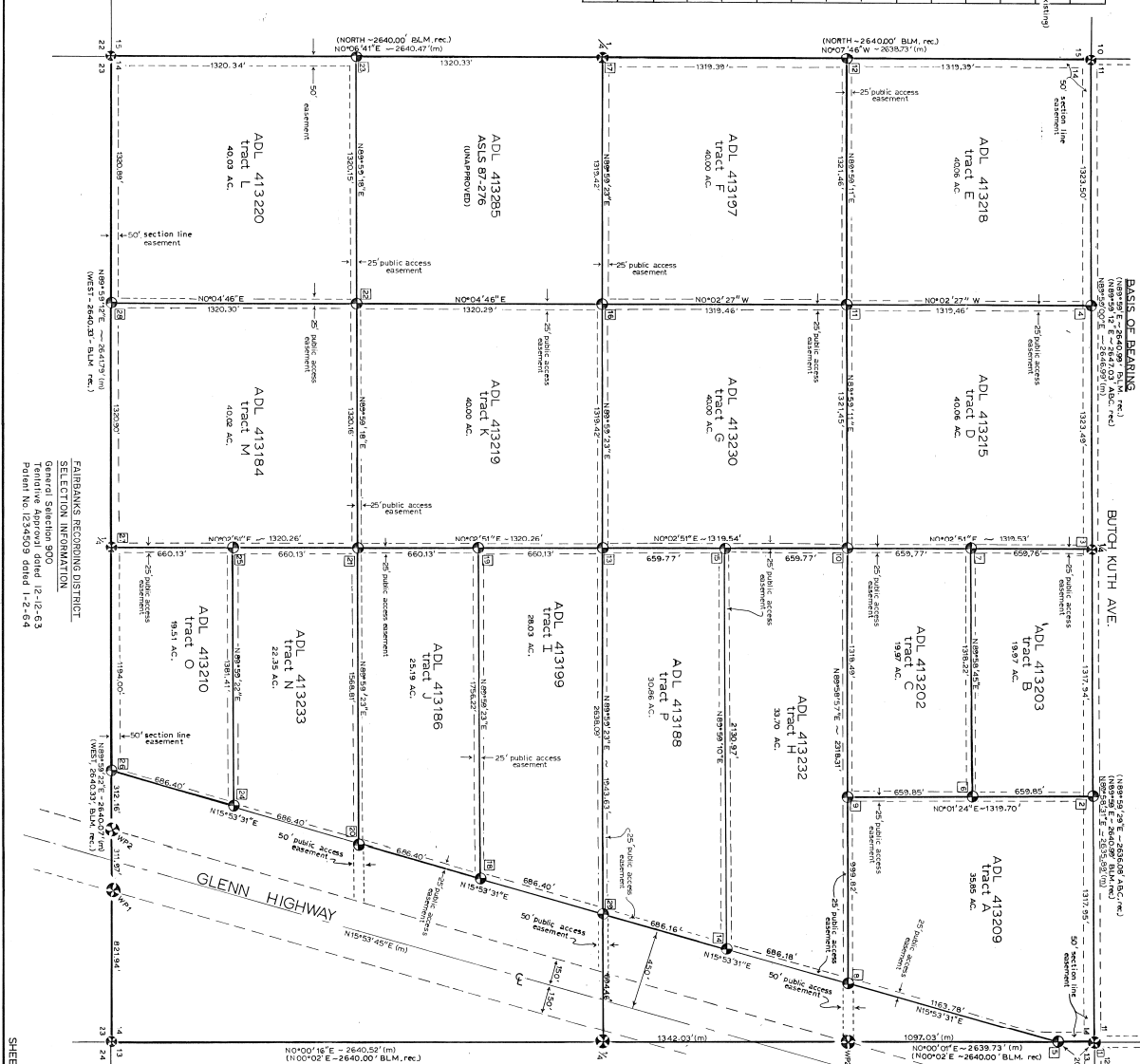


MONUMENT ACCESSORIES

DESCRIPTION	TRAIL	BEARING	DIST.	DESCRIPTION	TRAIL	BEARING	DIST.
1	1/4" S.I.L.	N 52° 30' 00" W	66.5'	10	1/4" S.I.L.	N 52° 30' 00" W	66.5'
2	1/4" S.I.L.	N 52° 30' 00" W	66.5'	11	1/4" S.I.L.	N 52° 30' 00" W	66.5'
3	1/4" S.I.L.	N 52° 30' 00" W	66.5'	12	1/4" S.I.L.	N 52° 30' 00" W	66.5'
4	1/4" S.I.L.	N 52° 30' 00" W	66.5'	13	1/4" S.I.L.	N 52° 30' 00" W	66.5'
5	1/4" S.I.L.	N 52° 30' 00" W	66.5'	14	1/4" S.I.L.	N 52° 30' 00" W	66.5'
6	1/4" S.I.L.	N 52° 30' 00" W	66.5'	15	1/4" S.I.L.	N 52° 30' 00" W	66.5'
7	1/4" S.I.L.	N 52° 30' 00" W	66.5'	16	1/4" S.I.L.	N 52° 30' 00" W	66.5'
8	1/4" S.I.L.	N 52° 30' 00" W	66.5'	17	1/4" S.I.L.	N 52° 30' 00" W	66.5'
9	1/4" S.I.L.	N 52° 30' 00" W	66.5'	18	1/4" S.I.L.	N 52° 30' 00" W	66.5'
19	1/4" S.I.L.	N 52° 30' 00" W	66.5'	19	1/4" S.I.L.	N 52° 30' 00" W	66.5'
20	1/4" S.I.L.	N 52° 30' 00" W	66.5'	20	1/4" S.I.L.	N 52° 30' 00" W	66.5'
21	1/4" S.I.L.	N 52° 30' 00" W	66.5'	21	1/4" S.I.L.	N 52° 30' 00" W	66.5'
22	1/4" S.I.L.	N 52° 30' 00" W	66.5'	22	1/4" S.I.L.	N 52° 30' 00" W	66.5'
23	1/4" S.I.L.	N 52° 30' 00" W	66.5'	23	1/4" S.I.L.	N 52° 30' 00" W	66.5'
24	1/4" S.I.L.	N 52° 30' 00" W	66.5'	24	1/4" S.I.L.	N 52° 30' 00" W	66.5'
25	1/4" S.I.L.	N 52° 30' 00" W	66.5'	25	1/4" S.I.L.	N 52° 30' 00" W	66.5'
26	1/4" S.I.L.	N 52° 30' 00" W	66.5'	26	1/4" S.I.L.	N 52° 30' 00" W	66.5'
27	1/4" S.I.L.	N 52° 30' 00" W	66.5'	27	1/4" S.I.L.	N 52° 30' 00" W	66.5'
28	1/4" S.I.L.	N 52° 30' 00" W	66.5'	28	1/4" S.I.L.	N 52° 30' 00" W	66.5'
29	1/4" S.I.L.	N 52° 30' 00" W	66.5'	29	1/4" S.I.L.	N 52° 30' 00" W	66.5'
30	1/4" S.I.L.	N 52° 30' 00" W	66.5'	30	1/4" S.I.L.	N 52° 30' 00" W	66.5'
31	1/4" S.I.L.	N 52° 30' 00" W	66.5'	31	1/4" S.I.L.	N 52° 30' 00" W	66.5'
32	1/4" S.I.L.	N 52° 30' 00" W	66.5'	32	1/4" S.I.L.	N 52° 30' 00" W	66.5'
33	1/4" S.I.L.	N 52° 30' 00" W	66.5'	33	1/4" S.I.L.	N 52° 30' 00" W	66.5'
34	1/4" S.I.L.	N 52° 30' 00" W	66.5'	34	1/4" S.I.L.	N 52° 30' 00" W	66.5'
35	1/4" S.I.L.	N 52° 30' 00" W	66.5'	35	1/4" S.I.L.	N 52° 30' 00" W	66.5'
36	1/4" S.I.L.	N 52° 30' 00" W	66.5'	36	1/4" S.I.L.	N 52° 30' 00" W	66.5'
37	1/4" S.I.L.	N 52° 30' 00" W	66.5'	37	1/4" S.I.L.	N 52° 30' 00" W	66.5'
38	1/4" S.I.L.	N 52° 30' 00" W	66.5'	38	1/4" S.I.L.	N 52° 30' 00" W	66.5'
39	1/4" S.I.L.	N 52° 30' 00" W	66.5'	39	1/4" S.I.L.	N 52° 30' 00" W	66.5'
40	1/4" S.I.L.	N 52° 30' 00" W	66.5'	40	1/4" S.I.L.	N 52° 30' 00" W	66.5'
41	1/4" S.I.L.	N 52° 30' 00" W	66.5'	41	1/4" S.I.L.	N 52° 30' 00" W	66.5'
42	1/4" S.I.L.	N 52° 30' 00" W	66.5'	42	1/4" S.I.L.	N 52° 30' 00" W	66.5'
43	1/4" S.I.L.	N 52° 30' 00" W	66.5'	43	1/4" S.I.L.	N 52° 30' 00" W	66.5'
44	1/4" S.I.L.	N 52° 30' 00" W	66.5'	44	1/4" S.I.L.	N 52° 30' 00" W	66.5'
45	1/4" S.I.L.	N 52° 30' 00" W	66.5'	45	1/4" S.I.L.	N 52° 30' 00" W	66.5'
46	1/4" S.I.L.	N 52° 30' 00" W	66.5'	46	1/4" S.I.L.	N 52° 30' 00" W	66.5'
47	1/4" S.I.L.	N 52° 30' 00" W	66.5'	47	1/4" S.I.L.	N 52° 30' 00" W	66.5'
48	1/4" S.I.L.	N 52° 30' 00" W	66.5'	48	1/4" S.I.L.	N 52° 30' 00" W	66.5'
49	1/4" S.I.L.	N 52° 30' 00" W	66.5'	49	1/4" S.I.L.	N 52° 30' 00" W	66.5'
50	1/4" S.I.L.	N 52° 30' 00" W	66.5'	50	1/4" S.I.L.	N 52° 30' 00" W	66.5'

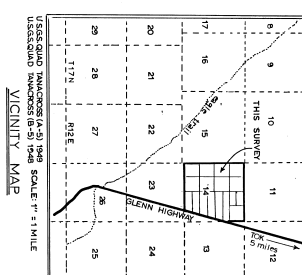
- NOTES**
1. SET PLANNED MARKERIZED ALUMINUM MONUMENT, 3/4" DIA, 2 3/8" O.D. PIPE, 30" LONG, SHIPPED 8/27/88.
 2. THE MINOR CORNER OF THE TRACT BOUNDARY AND THE MINOR CORNER OF THE MONUMENT SYSTEM SHALL BE IDENTIFIED BY A 1/4" DIA. ALUMINUM SHARP POINT SYSTEM AS FIELD MONUMENTS, METERS ON EITHER 10:00.
 3. THIS SURVEY WAS ACCOMPLISHED IN ACCORDANCE WITH HONESTY AND FAIRNESS.
 4. THE BEARINGS SHOWN ARE TRUE BEARINGS AS OBTAINED TO THE BASIS OF BEARING AND DISTANCES SHOWN ARE REDUCED TO HORIZONTAL FIELD DISTANCES.
 5. ALL MONUMENTS AND CORNERS BY THE STATE OF ALASKA, LOCATED WITHIN 500' FEET OF OR DELETED BY A SURVEYED SECTION LINE, ARE SUBJECT TO A 50 FOOT (50') EASEMENT EACH SIDE OF THE SECTION LINE, WHICH IS REFERRED TO THE STATE OF ALASKA FOR PUBLIC HIGHWAYS UNDER A.S. 18.05.010.
 6. SECTION 14 WAS SURVEYED BY S.L.M. # 1955, SURVEY APPROVED 12/18/79.

ASLS 81-205
 GLENN SUBD



FAIRBANKS RECORDING DISTRICT
 SELECTION INFORMATION
 General Selection 900
 Tentative Approval dated 12-12-83
 Patent No 1234509 dated 1-2-84

SHEET 1 OF 2



SURVEYOR'S CERTIFICATE

I, **ALAN B. BROWN**, REGISTERED AND LICENSED TO PRACTICE LAND SURVEYING IN THE STATE OF ALASKA, DO HEREBY CERTIFY THAT THE FOREGOING IS A TRUE AND CORRECT COPY OF THE ORIGINAL SURVEY RECORD AS FILED IN THE OFFICE OF THE STATE SURVEYOR, FAIRBANKS, ALASKA, AND THAT THE SURVEY WAS ACCOMPLISHED IN ACCORDANCE WITH THE REQUIREMENTS OF THE ALASKA SURVEYING ACT.

ALAN B. BROWN
 REGISTERED SURVEYOR
 No. 12345



RECORDED - FIELD NO. 90-14

EXHIBIT

ALASKA STATE LAND SURVEY

LEGEND

- MONUMENT RECOVERED
- REMOVED MONUMENT SET THIS SURVEY (SEE MAP)
- RECOVERED
- FIELD RECORD
- UNRECOVERED
- MONUMENT SET NUMBERS

SCALE

0 100 200 300 400 500 600 700 800 900 1000 feet

1 INCH = 200 FEET

1 METERS = 3.280833 US FEET, 1 US METERS = 0.3048 METERS

DATE OF SURVEY
 12/18/79

NAME OF SURVEYOR
 ALAN B. BROWN

PHONE NO.
 907-224-8790

STATE OF ALASKA
 DIVISION OF LAND & WATER MANAGEMENT
 ANCHORAGE, ALASKA

ALASKA STATE LAND SURVEY NO. 88-B

SECTION 14

THAMES RIVER NEAR FAIRBANKS, ALASKA

Drawn by
 D.B. Brown

Checked by
 C. Brown

Date
 12-18-79

Scale
 1" = 200'

APP. NO.
 ASLS 880008